



Sculptural, Geometric Lighting by Child Studio

A lighting collection featuring glass globes atop sloped, geometric bases that give the appearance of movement.



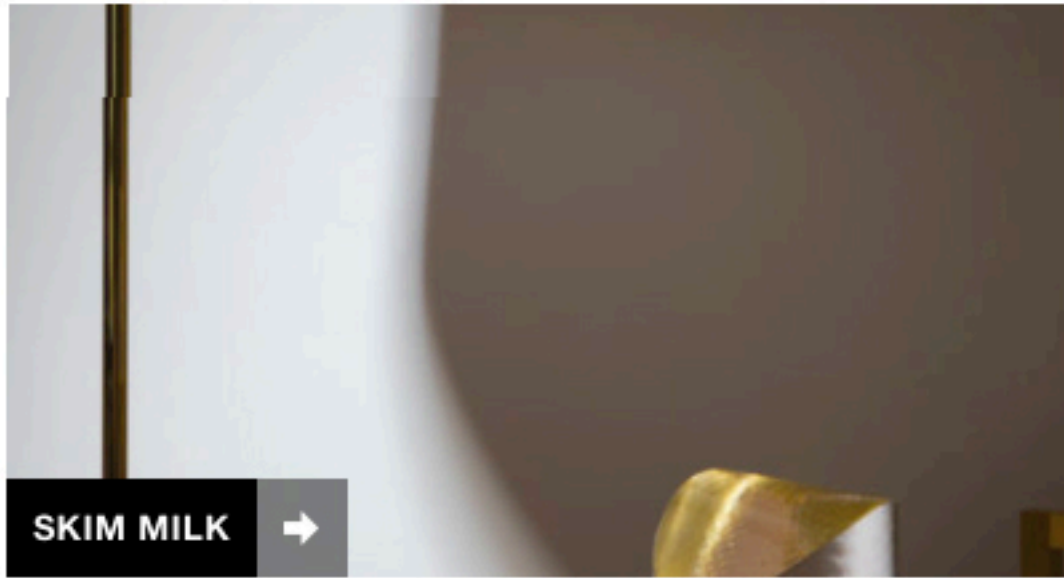
Patterned, Avant-Garde Wooden Blocks Inspired by Russian Toys

A collection of graphic wooden blocks inspired by the works of avant-garde Russian artists.



Arketipo Firenze Launches New Works by Renowned Designers

An Italian brand that brings a sense of fashion with the help of renowned designers that incorporate high-end glamour.



SKIM MILK →

John Hogan Solo Exhibition at Future Perfect

John Hogan produces a new series of exclusively commissioned glass furniture and sculptures for The Future Perfect.



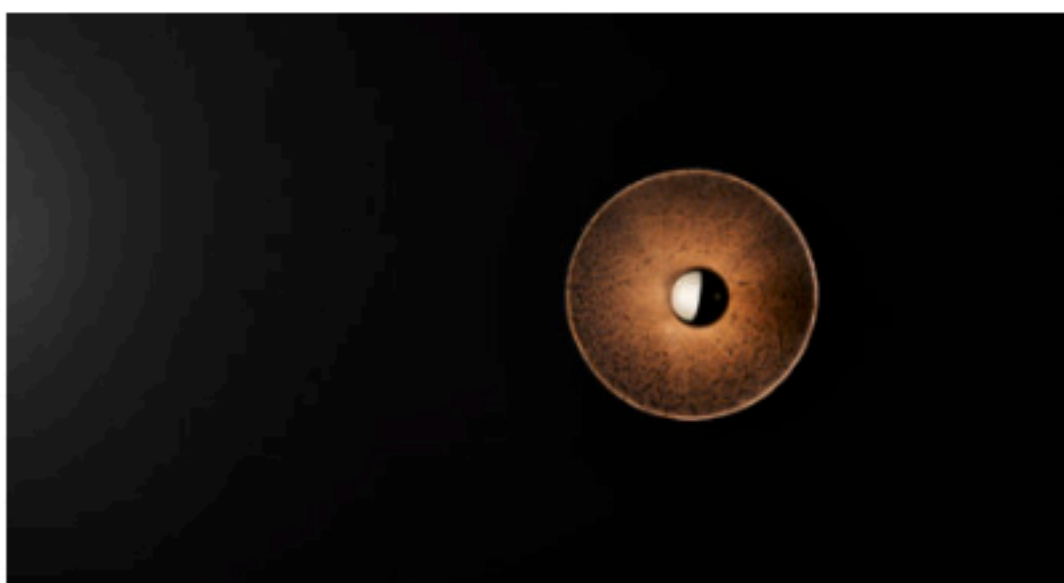
Introducing Orphan Work: From the Founders of Material Lust

The duo behind NYC-based Material Lust, launch Orphan Works, a brand that utilizes orphaned materials.



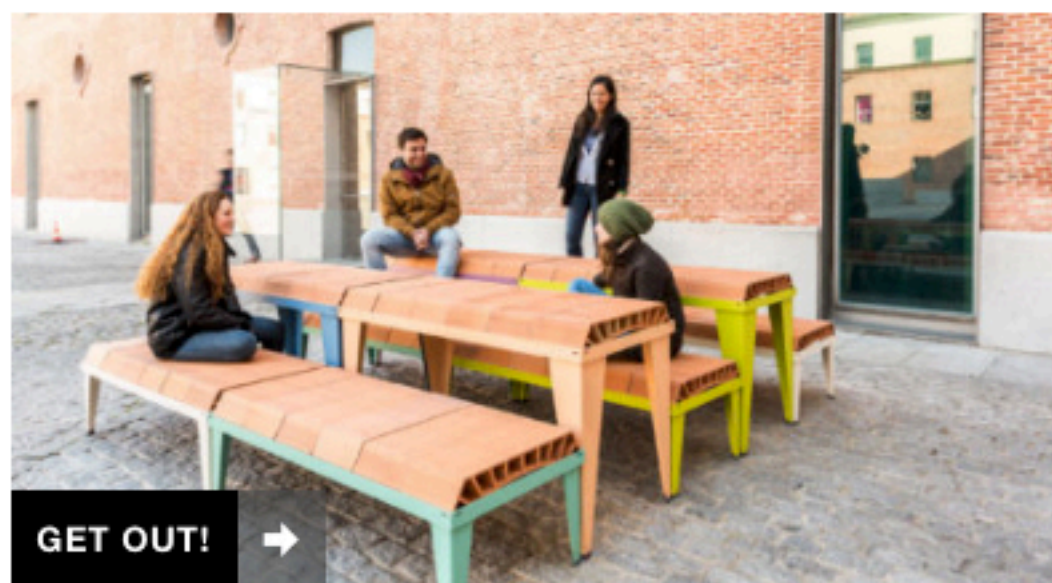
Forgotten Collection by Anja Lapatsch and Annika Unger

A collection of objects that transcend time.



Igneous: A Collection of Lighting Made From Bluestone

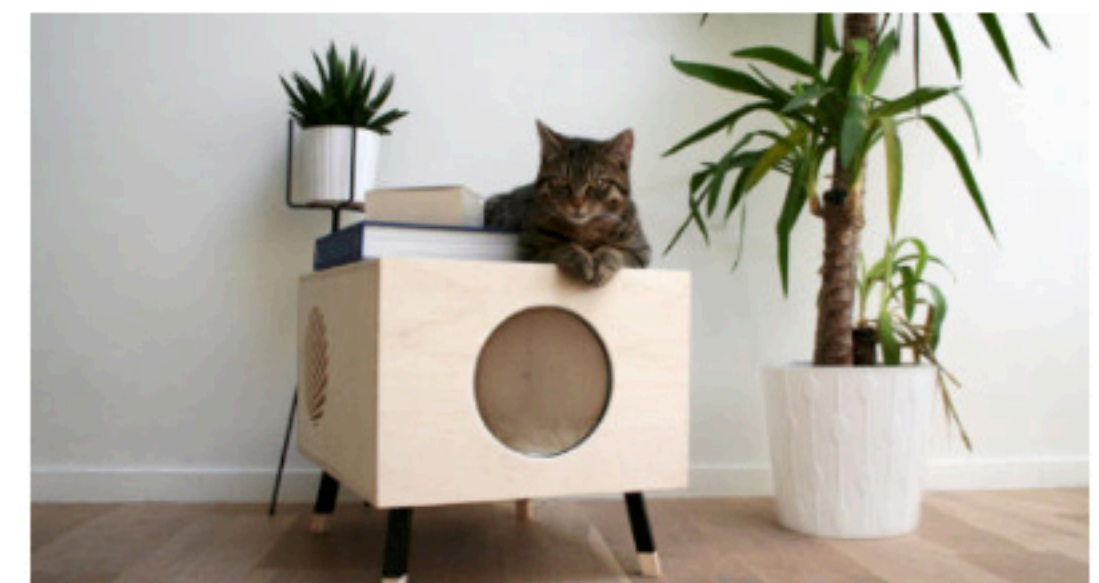
James Walsh explored ways to use traditional materials, like Victorian Bluestone, in contemporary ways when designing the Igneous Light.



GET OUT! →

A Modular Outdoor Furniture System Made by Stacking Components

A modular furniture system made of metal supports and ceramic forms that are configured to create picnic tables and seating.



A Modern Cat House They'll Love and You Won't Mind Having Around

Krab launches minimalist cat houses that your cats can escape to feel safe, while also blending in with your modern decor.

Arketipo Firenze Launches New Works by Renowned Designers

05.04.17 ∟ Posted by Caroline Williamson ∟ Home Furnishings Main

Arketipo Firenze is an Italian brand that brings a sense of fashion with the help of renowned designers that incorporate high-end glamour into their designs. From materials, color selections, and unconventional silhouettes, the brand continues to explore innovative ideas through their collaborations with the likes of **Mauro Lipparini**, Gino Carollo, Leonardo Dainelli, and Giuseppe Viganò. This latest round of designs was launched during Salone del Mobile 2017.



By **Mauro Lipparini**, NASH is an asymmetrical sofa with a dynamic, sculptural vibe. It features thin legs and feet that support its curvy, linear back and rounded seat.



Mauro Lipparini also designed the DOUGLAS trio of occasional tables constructed from metal bases and marble and glass tops that complement the sides and fronts of any sofa.



Along with the DOUGLAS tables above, the series also includes this matching bookshelf made from the same materials.